



### **Enforcing Exchange Message Sizes within Exchange 2000 (Small Business Server 2000)**

There are several places to look when configuring the Email Message Sizes within your organisation.

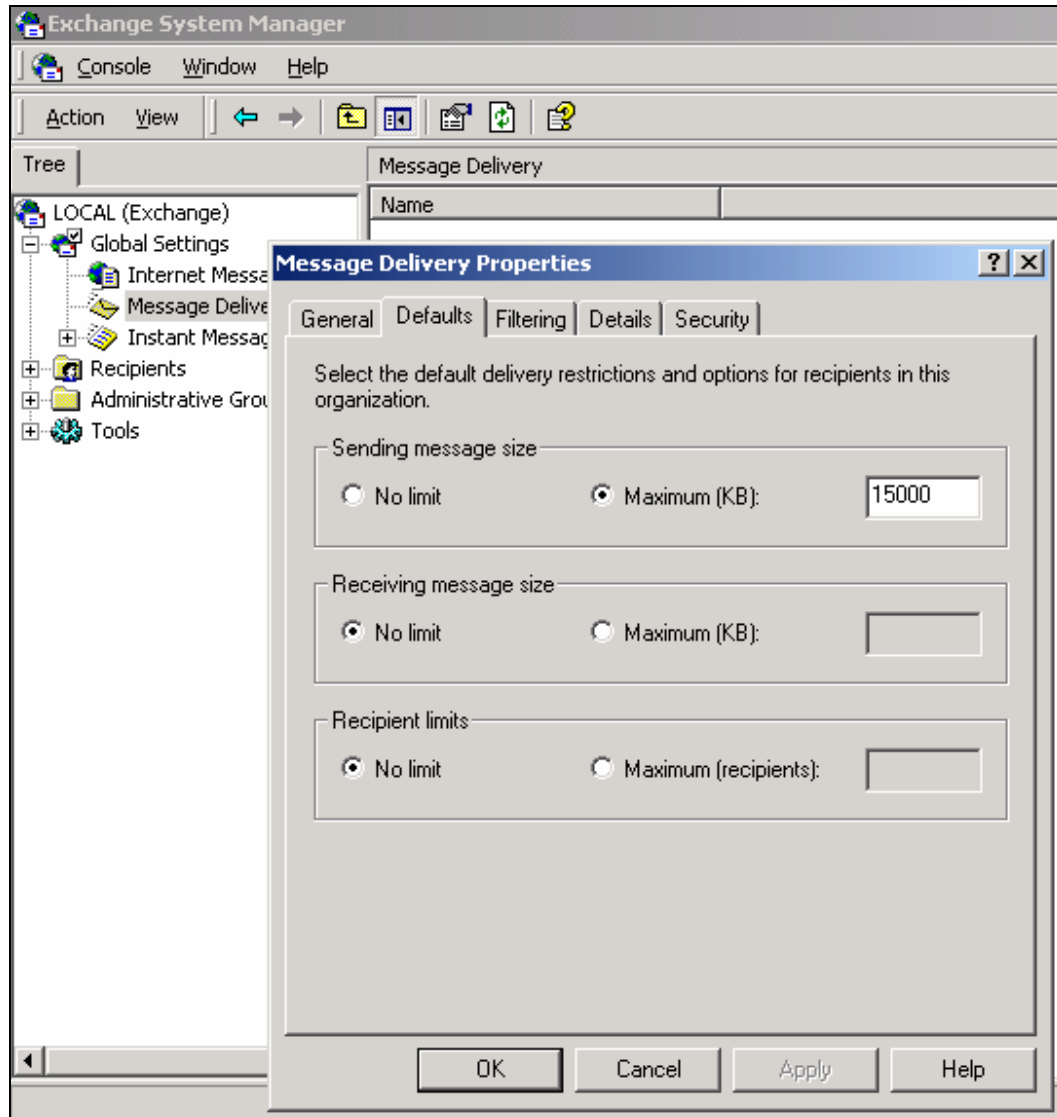
A maximum receiving message size of 10–15MB should be a realistic figure. Anything larger and it is likely that the ISP will block the message anyway.

Some organisations block attachments over 2MB. Therefore, it is worth setting a maximum sending message size to avoid excessively large messages being returned to your users by the recipient's server.

If you are using a POP3 Connector, it could be argued that enforcing receiving message sizes is pointless – as the message will have to be downloaded before it can be rejected (assuming you want to send an NDR). However, setting this restriction will prevent users mailboxes from becoming full as a result of abnormally large messages.

### **Within Exchange System Manager**

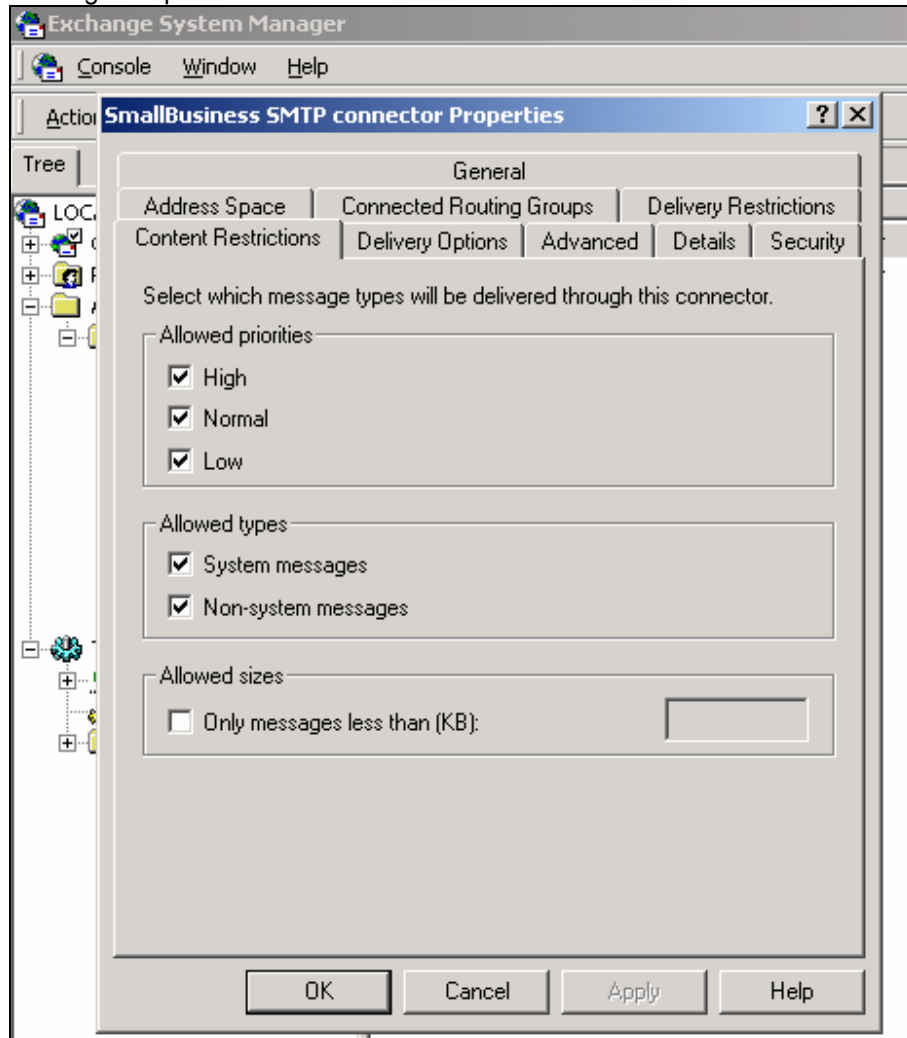
Exchange System Manager -> Global Settings -> Message Delivery -> Properties -> Defaults.



**Within the SMTP Connector Properties**

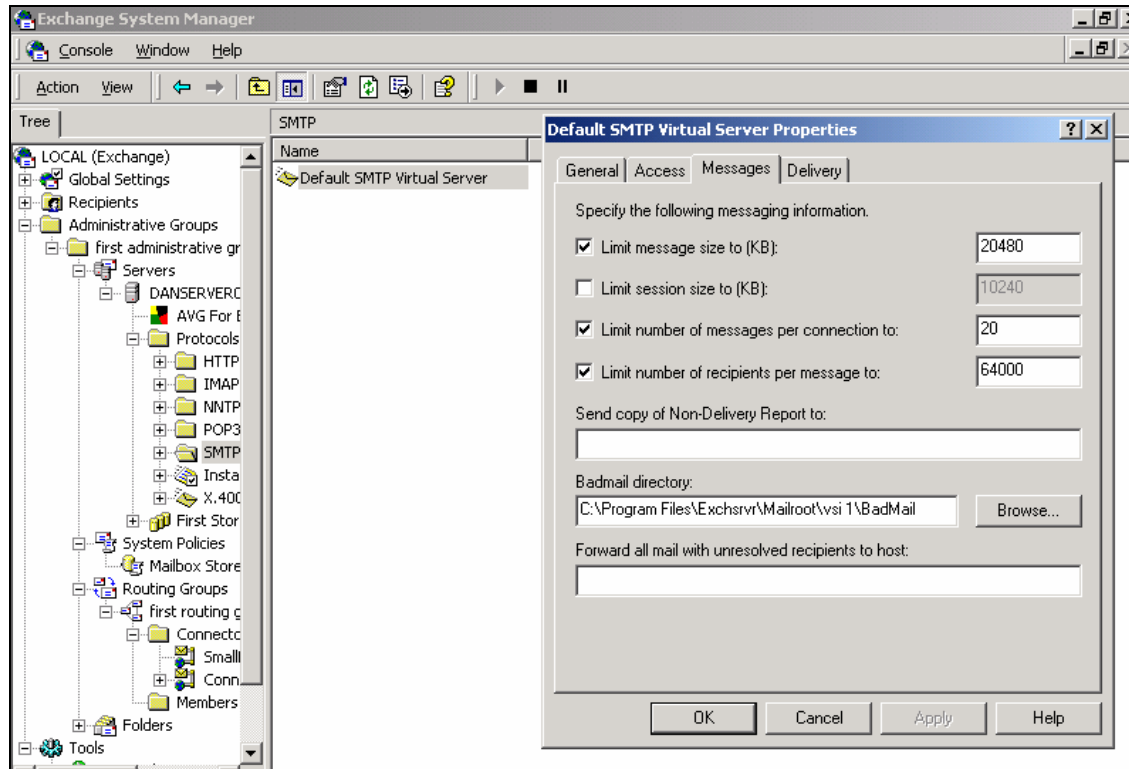
Specify a maximum message size within "Allowed Sizes".

Routing Groups -> Connectors -> Small Business SMTP Connector

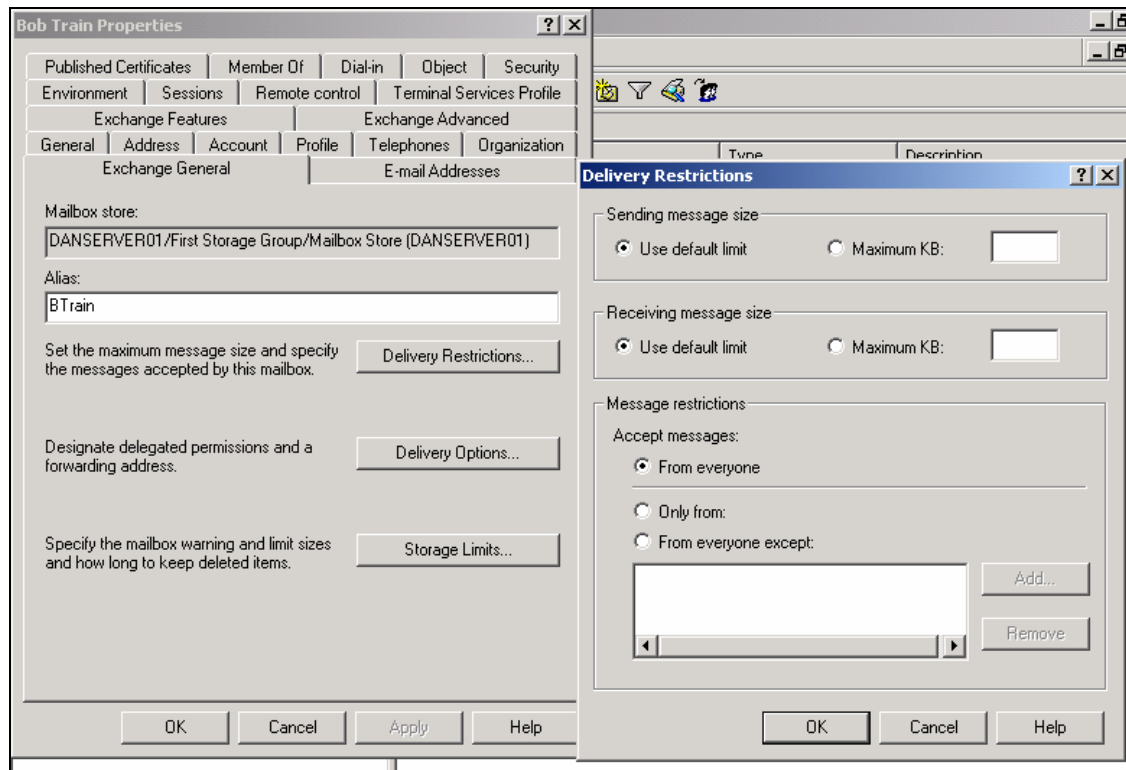


### Within the SMTP Virtual Server

Servers -> Protocols -> SMTP -> SMTP Virtual Server -> Properties -> Messages



### On Per User Basis (Active Directory Users and computers)



### NDR Reports Created by Exchange 2000

The NDR Report generated by Exchange 2000 will have the subject: "**Delivery Status Notification (Failure)**". Note that the user is not advised that the message was "too big".

If the message has been "rejected" by a third party (ISP), the subject header may well be different.

Additionally, if there is any Mail Filtering software installed on the server, this could also be the source of the NDR.

### NDR Message Sizes

If the Maximum Sending Message Size on the server is less than the Maximum Receiving message size, this may result in the NDR being blocked (by your own server before it leaves your organisation). To avoid this, refer to the following Microsoft Knowledge Base Article: [Q308303](https://support.microsoft.com/kb/q308303) Strip Attachments for Messages That Generate an NDR.

### **Maximum Mailbox Sizes**

The size of each users mailbox can be restricted as follows:

Servers -> System Policies -> Mailbox Store Limits -> Properties

